

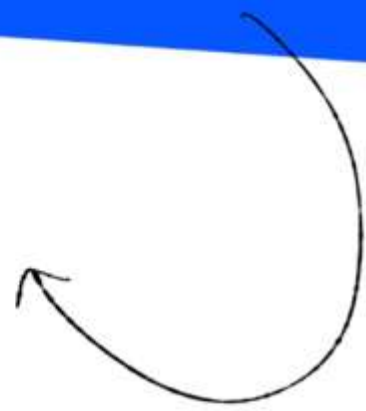


為企業上雲做好準備

Atlassian Cloud 的核心能力與安全架構

ZC

ZURONG | PRESALES ENGINEER, GCR



日程

- 為什麼現在談上雲？
- Atlassian Cloud 能力與安全的提升
- 企業如何「安全且高效」上雲
- Migration：我們如何協助企業落地
- Q&A

為什麼現在要考慮從 **DC** 轉到 **Cloud**

- DC 維運與升級成本持續上升
- 全球協作與遠端辦公，讓 DC 擴充更吃力
- 新能力 (AI、跨產品 Automation、Analytics...) 多以 Cloud 為優先

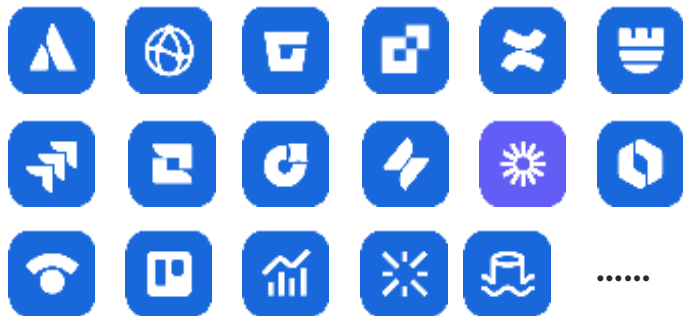


問題：上雲的安全與複雜度???

不只是「搬上雲」， 而是「能力升級」

Atlassian Cloud ≠ DC 搬到網路上

- 更聰明：AI + Automation
- 更可視：Analytics + Data Lake
- 更可靠：安全架構 + 身分與權限 + 規模化管理
- 更順滑：Fastshift服務



And More.....



ATLASSIAN

University

Champions

Ecosystem

Advisory

Learning

Blog

Marketplace

Partners

Support

Design

Developers

Community

Certifications

Documentations

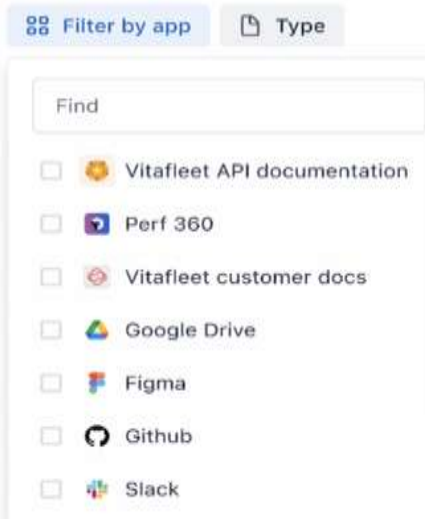
Community Events

更聰明

更可視

更可靠

更順滑



Knowledge Cards



Out of the box agents



Build your own agents



Many more Agents in the Marketplace...



更聰明

更可視

更可靠

更順滑

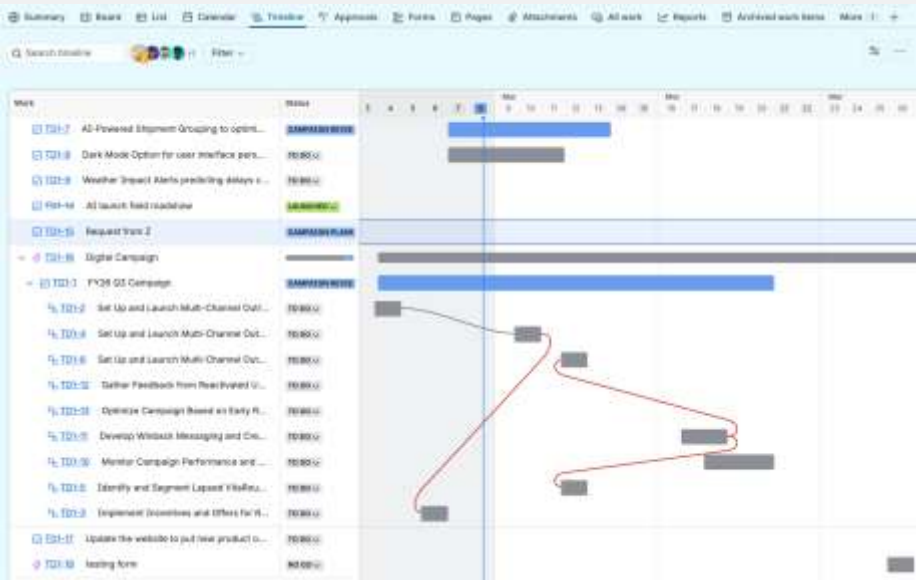
更聰明

更可視

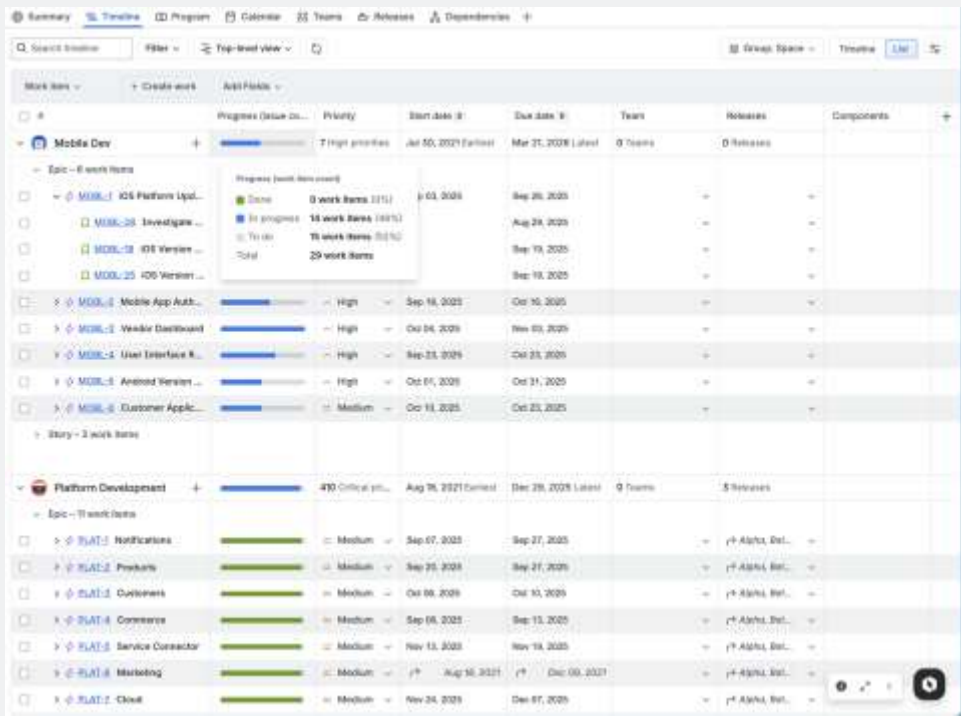
更可靠

更順滑

Team Level Timeline and Tasks



Cross Teams/Projects Plan with Views



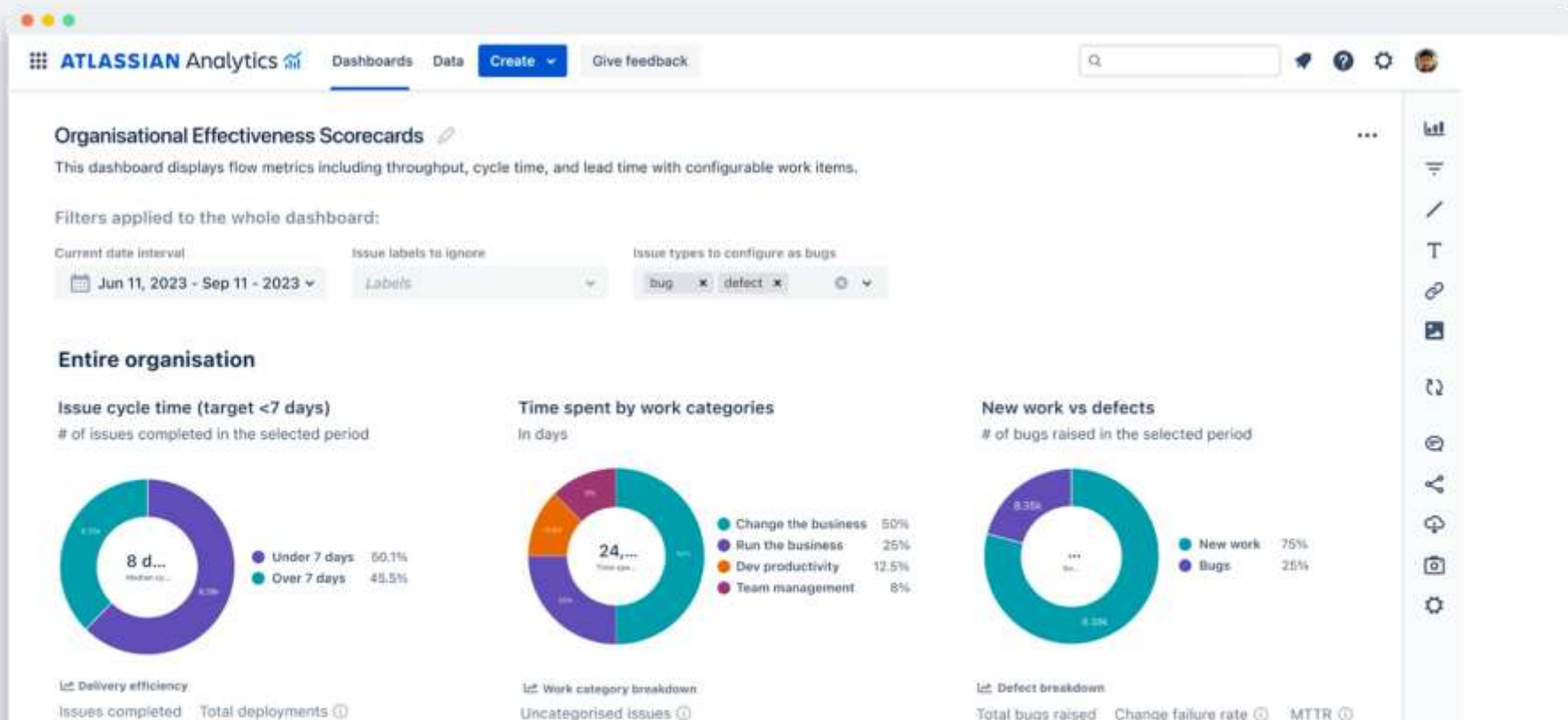
更聰明

更可視

更可靠

更順滑

Org Level Dashboards

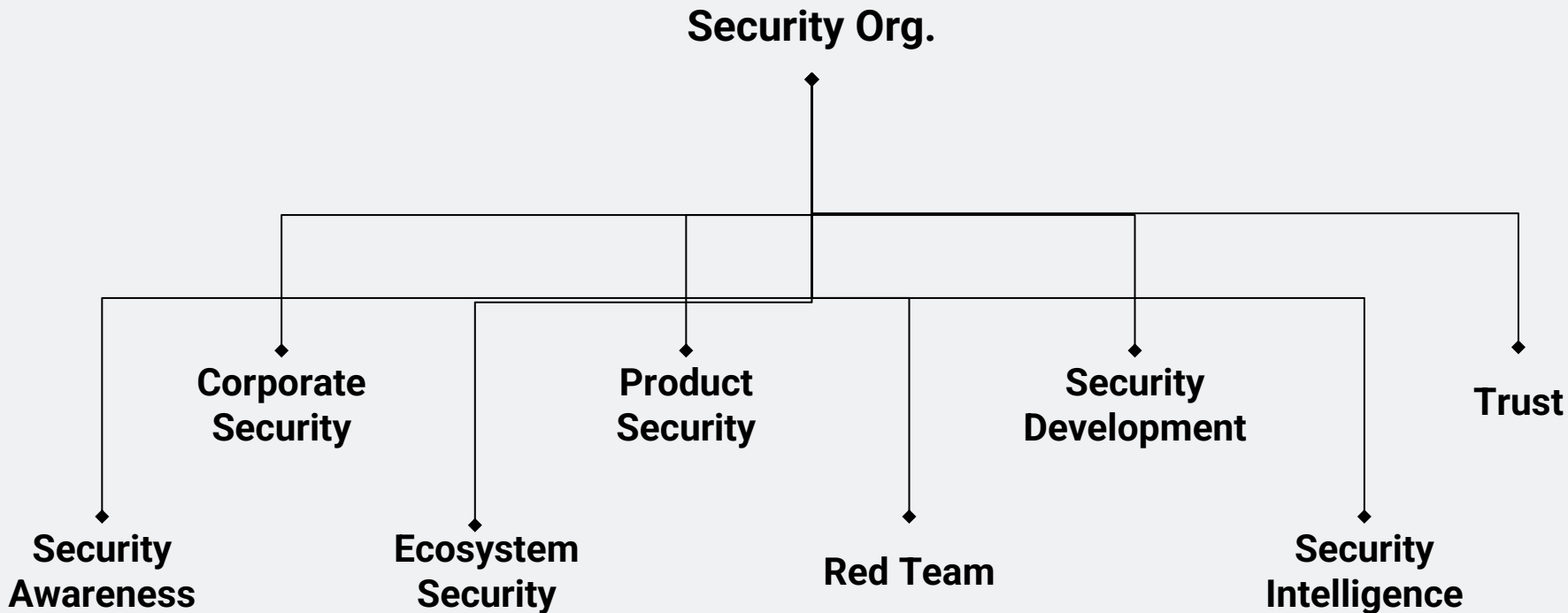


更聰明

更可視

更可靠

更順滑



更聰明

更可視

更可靠

更順滑

Org 層面 用戶中央管理 | Group 管理 | 產品訪問管理 (No shadow IT) | 全局安全機制

Site 層面 Policy管理 | 多IDP管理 | Mobile/ IP Allowlist | Audit | Domain

產品 層面 Company/ Team Managed | Integration | Roles and Permission

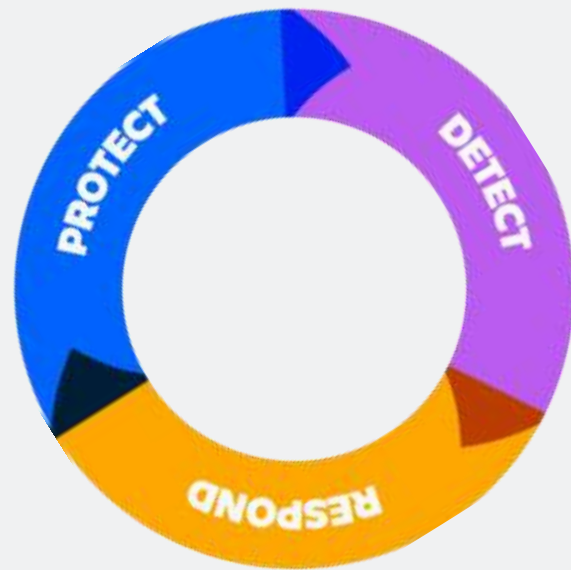
專案 層面 Project Role | Issue Type | Workflow | Automation

工單 層面 Scheme | Issue Fields | Screen | Permission

AWS | 雲端認證 | 數據保護 | 實踐

如果您的組織需要更為精細化的安全管理能力：

- 🔒 需要對不同類型的資料保護方式進行更精細的控制
- 🔍 不僅需要查看審計日誌，還需要針對異常活動發出主動警報
- ➡️ 需要採取切實可行的措施，迅速應對潛在威脅



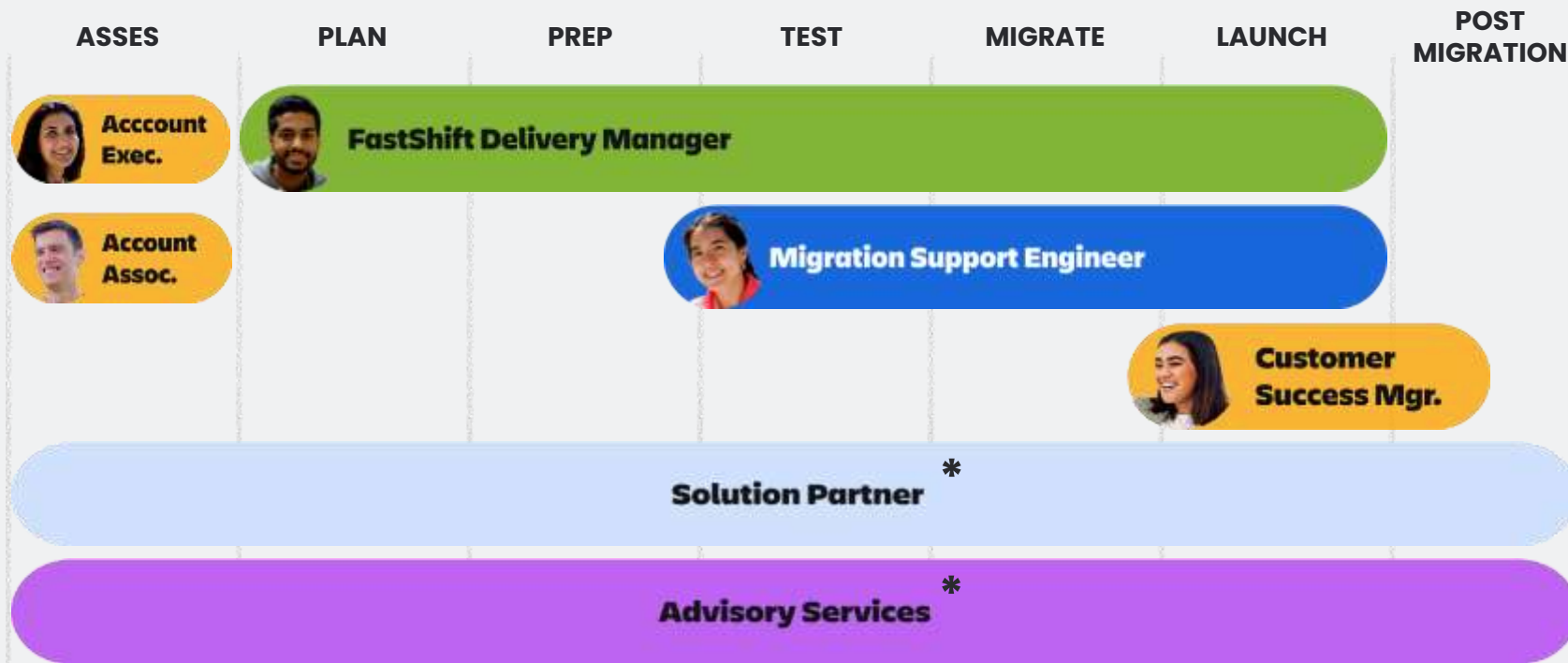
更聰明

更可視

更可靠

更順滑

FastShift | Migration Support





Technical Support Offerings | FastShift



Recommended

Hands-on-Backup

What it is: The customer provides Atlassian with a database and attachment dump of their production instance

How it works: We perform test migrations and troubleshooting in our secure AWS environment using your backup, developing detailed runbooks for your production migration. You then execute the final migration either from your infrastructure or using a fresh backup in our environment.

When used: This is our recommended support option - it helps us accelerate your migration efficiently.



Hands-on-Infrastructure

What it is: The customer provides Atlassian support with direct VPN access to the customer's environment

How it works: Atlassian engineers directly access your production data to perform test migrations, troubleshoot issues, and resolve solutions hands-on.

When used: While this method lets us manage your entire migration, it requires access to your environment - which can take time to arrange..



Over-the-Shoulder

What it is: Atlassian provides remote, real-time guidance to the customer's team during the migration process

How it works: Atlassian provides guidance through screen-sharing, Slack channels, and calls. Your team executes the migration while we offer real-time advice, troubleshooting, and best practices. We don't access your systems directly.

When used: When VPN access and backup transfers aren't possible, this becomes our final option. Your team leads the migration while we guide the process.

ATLASSIAN SYSTEM OF WORK 願景

Align to the right
goals
朝著正確的目標努力



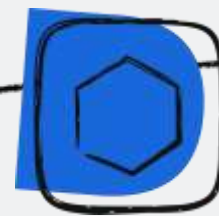
Plan and track work
together
共同製定和追蹤工作計劃



Harness
knowledge
運用知識



Welcome AI to the
team
歡迎人工智慧加入團隊



提升開發體驗，生產力和軟體質量的統一平台

設定戰略與目標

- + 讓工作與業務目標和交付團隊保持一致
- + 大規模管理工作（產能、風險、時間表等）

產品創意與優先排序

- + 根據範圍和影響，捕捉、優先排序並衡量創意
- + 協調團隊與產品路線圖

Plan + Track

- + Plan, orchestrate, and track delivery
- + Share engineering knowledge and standards across teams

Build, Test, and Deploy

- + Manage source code and CI/CD
- + Deliver reusable services/tooling via Internal Developer Platform
- + Release orchestration and toolchain automation

Operate + Support

- + Incident management + AIOps
- + Service desk/support
- + Software health scorecards/Standardization



ALIGN



TALENT



FOCUS



JIRA PRODUCT DISCOVERY



Jira



Confluence



Compass



Bitbucket



Jira Service Management



ATLASSIAN Rovo



Thank you!